

FARM DIRECTIONS

Please remember to wear clean, comfortable gardening clothes and closed-toed shoes that you don't mind getting dirty. We will be harvesting rain or shine, so be prepared for all weather! Don't forget to bring water, sunscreen, and gardening gloves if you have them (if not, we will provide them).

Directions:

21 Acres:

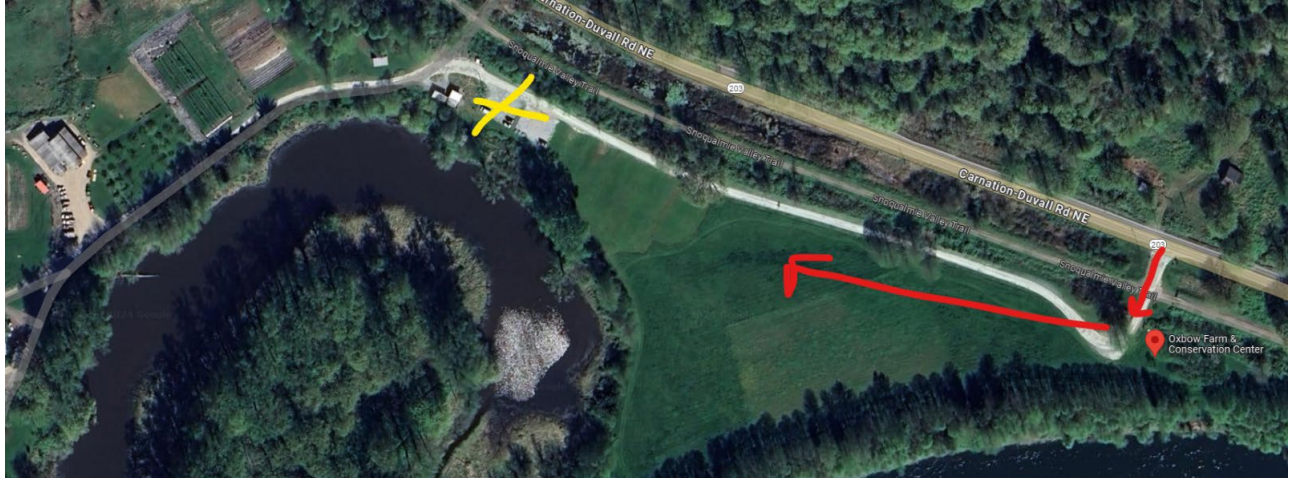
[13701 NE 171st St, Woodinville, WA 98072](#)



The 21 Acres Center is a two-story gold building located on the right-hand side of the street. Turn into the parking lot and park anywhere. There will be tents set up on the sidewalk in the parking lot for gleaning events. This is where volunteers will meet and check in.

Oxbow Farm:

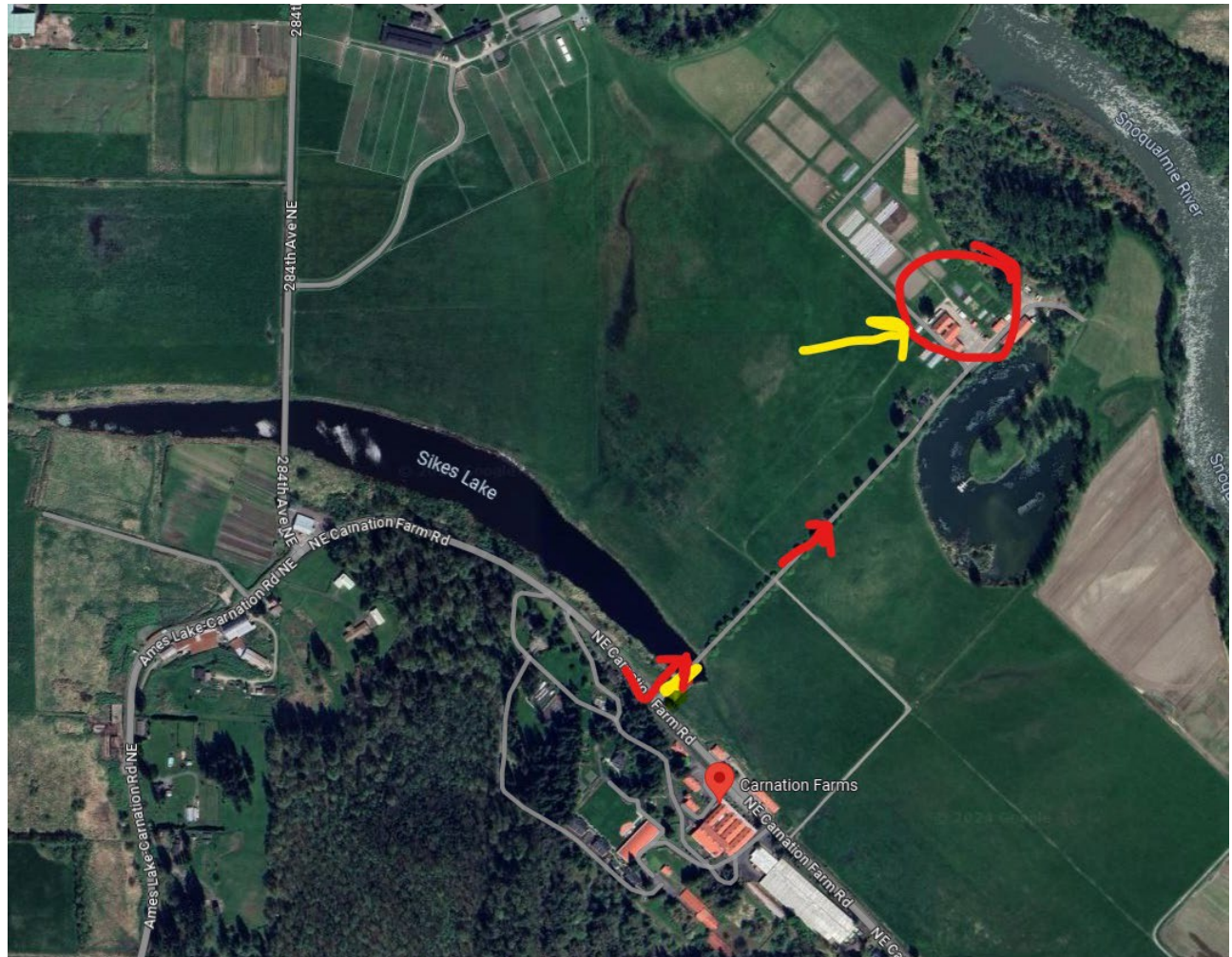
[10819 Carnation Duvall Rd Carnation, WA. 98014](https://www.google.com/maps/place/10819+Carnation+Duvall+Rd+Carnation,+WA+98014)



Note: There are 3 entrances to Oxbow. Please use the public entrance, 1.4 miles south of the 124th Street roundabout. It will be marked with a "Welcome to Oxbow" sign. Following the red arrows/lines on the photo, you will turn into the entrance and drive down a dirt path. At the yellow 'x' is the parking lot and farmstand, where you should park and where you will meet volunteers. You will continue down that road in the van only after you have gathered with volunteers and spoken with Oxbow staff.

Carnation Farms

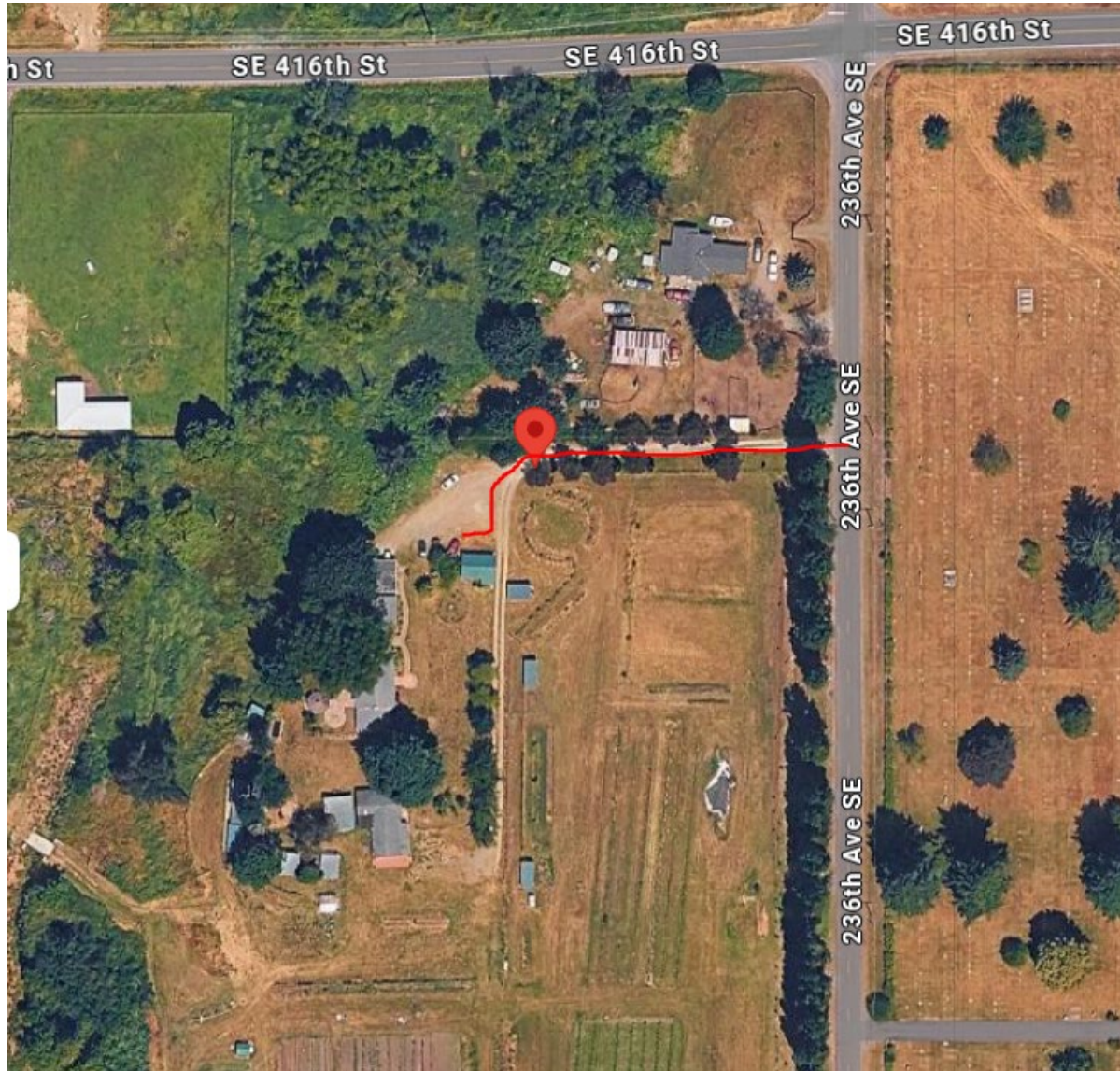
[28901 NE Carnation Farm Rd. Carnation WA 98014](https://www.google.com/maps/place/28901+NE+Carnation+Farm+Rd,+Carnation,+WA+98014)



Turn into a dirt area with a white gate and a bridge just ahead (where the red arrow is, the yellow line is the bridge). If the gate is closed, contact Carnation Farms staff. Otherwise, drive slowly over the bridge and between the path of trees (marked by the second red arrow). At the end there will be a few buildings and a parking lot (red circle). This is where you will park and meet with volunteers and staff.

Ayeko Farm

[41633 236th Ave SE Enumclaw WA 98022](#)



Pull down the driveway, follow it as it curves left all the way down to the blue house and park on that side.